

ARDESTO



PRODUCT CATALOG 2023



# CONTENTS

## KITCHEN APPLIANCES

### BEVERAGE PREPARATION

Electric Kettles .....	6
Coffee Machines .....	10
Juicers .....	12

### FOOD PROCESSING

Hand Blenders .....	14
Countertop Blenders .....	15
Choppers .....	15
Mixers .....	16
Kitchen Scales .....	17
Kitchen Machines .....	18
Meat Grinders .....	18
Coffee Grinders .....	20
Slicers .....	20

### COOKING

Toasters .....	22
Sandwich Makers .....	22
Multi Makers .....	23
Electric Grills .....	23
Electric Hobs .....	24
Induction Hobs .....	25
Food Dehydrators .....	26
Slow Cookers .....	26
Microwave Ovens .....	27
Electric Ovens .....	30
Freestanding Cookers .....	32

## HOUSEHOLD APPLIANCES

### CORDLESS VACUUM CLEANERS

Robotic Vacuum Cleaners .....	38
Cordless Vacuum Cleaners .....	38

### GARMENT CARE

Fabric Pill Remover .....	41
Irons .....	41
Steamers .....	42

## BEAUTY & HEALTH CARE PRODUCTS

### HEALTH CARE

Floor Scales .....	45
Oral Irrigators .....	47
Electric Toothbrushes .....	47

### BEAUTY

Hair Dryers .....	50
Professional Hair Dryers .....	52
Curlers .....	52
Straighteners .....	53
Hair Clippers .....	53
Trimmers .....	54
Epilators .....	54

## REFRIGERATION EQUIPMENT

Refrigerators .....	56
Coolers .....	59
Freezers .....	60
Wine Coolers .....	61
Ice Makers .....	61

## WASHING MACHINES

Semi Automatic Washing Machines .....	63
Automatic Washing Machines .....	64

## CLIMATE CONTROL EQUIPMENT

Convector Heaters .....	68
Fan Heaters .....	69
Industrial Fan Heaters .....	69
Oil Heaters .....	70
Infrared Heaters .....	71
Ceramic Heating Panels .....	72
Fans .....	75
Humidifiers .....	77
Air Purifiers .....	77
Electric Water Heaters .....	78

## BUILT-IN APPLIANCES

Built-In Wine Coolers .....	80
-----------------------------	----

ARDESTO



МЕНЮ АВТОПРИГОТУВАННЯ  
1. Молоко/Кава 2. Рис 3. Смагетті  
4. Картопля 5. Авторозігрів 6. Риба

7. Птиця 8. М'ясо 9. Барбекю  
10. Авторозморозування

ПОТУЖИВІСТЬ ЧАС

ВАГА

ПІП ГРИЛЬ

КОМБІ ВІДКЛАДЕНИЙ СТАРТ

СТАРТ / ШВИДКИЙ СТАРТ

СТОП / СКАСУВАННЯ

МЕНЮ / ТАЙМЕР

KITCHEN APPLIANCES

# BEVERAGE PREPARATION



Electric Kettles



Product code	EKL-F100	EKL-F110	EKL-F17WG
Power, W	1 800	1 800	1 800
Capacity, L	1,7	1,7	1,7
Body material	Glass	Glass	Plastic
Controller	Strix, UK	Strix, UK	Strix, UK
Heating element	Concealed, stainless steel	Concealed, stainless steel	Concealed, stainless steel
LED illuminated interior	Yes	Yes	No
Additional features	Boil-dry protection; auto shut-off; up to 12,000 boiling cycles	Boil-dry protection; auto shut-off; up to 12,000 boiling cycles	Boil-dry protection; auto shut-off; up to 12,000 boiling cycles



Product code	EKL-F18B	EKL-F19B	EKL-F200
Power, W	1 800	1 800	1 800
Capacity, L	1,7	1,7	1,7
Body material	Double wall	Plastic	Glass
Controller	Strix, UK	Strix, UK	Strix, UK
Heating element	Concealed, stainless steel	Concealed, stainless steel	Concealed, stainless steel
LED illuminated interior	No	No	Yes
Additional features	Boil-dry protection; auto shut-off; up to 12,000 boiling cycles	Boil-dry protection; auto shut-off; up to 12,000 boiling cycles	Boil-dry protection; auto shut-off; up to 12,000 boiling cycles



<b>Product code</b>	<b>EKL-F300R</b>	<b>EKL-F300W</b>	<b>EKL-F340BG</b>
<b>Power, W</b>	1 800	1 800	1 800
<b>Capacity, L</b>	1,7	1,7	1,7
<b>Body material</b>	Stainless steel	Stainless steel	Stainless steel
<b>Controller</b>	Strix, UK	Strix, UK	Strix, UK
<b>Heating element</b>	Concealed, stainless steel	Concealed, stainless steel	Concealed, stainless steel
<b>LED illuminated interior</b>	Yes	Yes	No
<b>Additional features</b>	Boil-dry protection; auto shut-off; up to 12,000 boiling cycles	Boil-dry protection; auto shut-off; up to 12,000 boiling cycles	Boil-dry protection; auto shut-off; up to 12,000 boiling cycles



<b>Product code</b>	<b>EKL-F340BRZ</b>	<b>EKL-F340R</b>	<b>EKL-F400G</b>
<b>Power, W</b>	1 800	1 800	1 850
<b>Capacity, L</b>	1,7	1,7	1,8
<b>Body material</b>	Stainless steel	Stainless steel	Stainless steel
<b>Controller</b>	Strix, UK	Strix, UK	Strix, UK
<b>Heating element</b>	Concealed, stainless steel	Concealed, stainless steel	Concealed, stainless steel
<b>LED illuminated interior</b>	No	No	No
<b>Additional features</b>	Boil-dry protection; auto shut-off; up to 12,000 boiling cycles	Boil-dry protection; auto shut-off; up to 12,000 boiling cycles	Boil-dry protection; auto shut-off; up to 12,000 boiling cycles



<b>Product code</b>	<b>EKL-F410BG</b>	<b>EKL-F410BM</b>	<b>EKL-FD700SS</b>
<b>Power, W</b>	1 850	1 850	1 850
<b>Capacity, L</b>	1,8	1,8	1,7
<b>Body material</b>	Stainless steel	Stainless steel	Stainless steel
<b>Controller</b>	Strix, UK	Strix, UK	Strix, UK
<b>Heating element</b>	Concealed, stainless steel	Concealed, stainless steel	Concealed, stainless steel
<b>LED illuminated interior</b>	No	No	Yes
<b>Additional features</b>	Temperature indicator on the body; boil-dry protection; auto shut-off; up to 12,000 boiling cycles	Temperature indicator on the body; boil-dry protection; auto shut-off; up to 12,000 boiling cycles	Temperature adjustment: 50°C, 70°C, 80°C, 90°C; electronic control on the handle; boil-dry protection; auto shut-off; up to 12,000 boiling cycles



<b>Product code</b>	<b>EKL-T30</b>	<b>EKL-X50</b>	<b>EKL-X51</b>
<b>Power, W</b>	1 500	2 200	2 200
<b>Capacity, L</b>	1,8	1,7	1,5
<b>Body material</b>	Stainless steel	Double wall	Double wall
<b>Controller</b>	FADA, CN	Strix, UK	Strix, UK
<b>Heating element</b>	Concealed, stainless steel	Concealed, stainless steel	Concealed, stainless steel
<b>LED illuminated interior</b>	No	No	No
<b>Additional features</b>	Boil-dry protection; auto shut-off	Boil-dry protection; auto shut-off; up to 12,000 boiling cycles	Boil-dry protection; auto shut-off; up to 12,000 boiling cycles





	<b>EKL-X52E</b>	<b>EKL-X53E</b>
<b>Product code</b>	<b>EKL-X52E</b>	<b>EKL-X53E</b>
<b>Power, W</b>	2 200	2 000
<b>Capacity, L</b>	1,5	1,7
<b>Body material</b>	Double wall	Double wall
<b>Controller</b>	Strix, UK	Otter
<b>Heating element</b>	Concealed, stainless steel	Concealed, stainless steel
<b>LED illuminated interior</b>	No	No
<b>Additional features</b>	Boil-dry protection; auto shut-off; up to 12,000 boiling cycles; LED display on the body; electronic thermostat for temperature adjustment	Boil-dry protection; auto shut-off; up to 12,000 boiling cycles; LED display on the body; 30 minutes keep warm function; electronic thermostat for temperature adjustment

Coffee Machines



Product code	ECM-E10B	YCM-E1600	ECM-EM14S
Type	Pump	Pump	Pump
Power, W	1 633	850	1 450
Pump pressure, bar	20	15	20
Type of coffee	Ground	Ground	Ground
Water tank capacity, L	1	1,6	1,4
Coffee grinder	No	No	No
Additional features	Cup warming surface; overheat and overpressure protection system; auto clean and descale	Italian pump; double SUS304 stainless steel filter for two cups; overheat and overpressure protection system; Pannarello milk frother; measuring spoon included	Serving size adjustment; cup warming surface; overheat and overpressure protection system; auto preparation: espresso, double espresso, cappuccino, latte, milk froth; auto clean and descale
Dimensions (w x h x d), mm	320 x 340 x 250	320 x 320 x 260	300 x 370 x 260
Weight, kg	3,85	3,62	5



Product code	FCM-D2100	FCM-D3100	FCM-D3200
Type	Drip	Drip	Drip
Power, W	900	900	900
Pump pressure, bar	-	-	-
Type of coffee	Ground	Ground	Ground
Water tank capacity, L	1,2	1,5	1,5
Coffee grinder	No	No	No
Additional features	Possibility of making tea; non-stick plate for auto coffee pot heating; anti-drip system; overheat protection; water level indicator; main switch with power indicator; non-slip base	Possibility of making tea; coffee strength adjustment; LCD display; touch control; programmable timer up to 24 hours	Display with white backlight; coffee pot heating; anti-drip system; coffee strength adjustment; timer
Dimensions (w x h x d), mm	230 x 320 x 190	250 x 340 x 190	190 x 350 x 250
Weight, kg	1,63	2,41	2,47



Product code	YCM-D060	YCM-D1200	FCM-D17WG
Type	Drip	Drip	Drip
Power, W	650	1 050	920
Pump pressure, bar	-	-	-
Type of coffee	Ground	Whole bean/Ground	Ground
Water tank capacity, L	0,6	1,2	1,5
Coffee grinder	No	Yes	No
Additional features	Anti-drip system; overheat protection; water level indicator	Digital display; heating function; delayed start function; auto shut-off (40 minutes)	Non-stick plate for auto coffee pot heating; anti-drip system; overheat protection; water level indicator; switch with power indicator; non-slip base
Dimensions (w × h × d), mm	200 × 280 × 145	240 × 350 × 330	220 × 350 × 230
Weight, kg	1,05	3,53	2,09



Product code	FCM-E15BG	YCM-E1500	YCM-E1501
Type	Pump	Pump	Pump
Power, W	1 050	1350	1350
Pump pressure, bar	15	20	20
Type of coffee	Ground	Ground	Ground
Water tank capacity, L	1,2	1,4	1,4
Coffee grinder	No	No	No
Additional features	Serving size adjustment; making two cups of coffee at the same time; cup warming surface; overheat and overpressure protection system; stainless steel Pannarello milk frother	Italian pump; touch control; PID control; pre-soaking function; overheat and overpressure protection system	Italian pump; touch control; PID control; pre-soaking function; overheat and overpressure protection system
Dimensions (w × h × d), mm	300 × 320 × 250	380 × 370 × 200	380 × 370 × 200
Weight, kg	3,4	3,84	3,84

Juicers



<b>Product code</b>	<b>CJK-1L</b>	<b>JEG-1000</b>	<b>JEG-800</b>
<b>Power, W</b>	25	1 000	800
<b>Type</b>	Citrus press	Centrifugal	Centrifugal
<b>Body material</b>	Plastic	Metal	Metal
<b>Number of speed settings</b>	-	2	2
<b>Feed tube diameter, mm</b>	-	65	75
<b>Juice jug capacity, L</b>	1	0,5	1
<b>Pulp container capacity, L</b>	-	1,5	0,5
<b>Reverse function</b>	Yes	No	No
<b>Additional features</b>	-	Motor overheat protection	Motor overheat protection



<b>Product code</b>	<b>JEG-1330SL</b>	<b>JEG-1500S</b>	<b>JEG-1330S</b>
<b>Power, W</b>	200	200	200
<b>Type</b>	Masticating	Masticating	Masticating
<b>Body material</b>	Metal	Plastic	Metal
<b>Number of speed settings</b>	1 (90 rpm)	1 (90 rpm)	1 (90 rpm)
<b>Feed tube diameter, mm</b>	85	45	40
<b>Juice jug capacity, L</b>	0,6	0,4	0,6
<b>Pulp container capacity, L</b>	0,6	0,7	0,6
<b>Reverse function</b>	Yes	Yes	Yes
<b>Additional features</b>	Anti-drip coating; motor overheat protection	Anti-drip coating; motor overheat protection	Anti-drip coating; motor overheat protection

# FOOD PROCESSING



Hand Blenders



<b>Product code</b>	<b>HBK-740W</b>	<b>HBK-800BR</b>	<b>HBK-1601BR</b>
<b>Type</b>	Hand	Hand	Hand
<b>Power, W</b>	500	800	900
<b>Power modes</b>	2	2 (smooth adjustment)	Adjustment by pressure
<b>Body/beaker material</b>	Plastic	Metal	Metal; soft-touch handle
<b>Detachable blending shaft</b>	Stainless steel	Stainless steel	Stainless steel
<b>Blades</b>	Stainless steel	Stainless steel	X-shaped titanium coated blades
<b>Accessories</b>	Mixing/measuring beaker, 700 ml	Mixing/measuring beaker, 600 ml; whisk	Chopper, 500 ml; mixing/measuring beaker, 600 ml; whisk
<b>Dimensions (w × h × d), mm</b>	120 × 180 × 250	120 × 240 × 160	130 × 250 × 240
<b>Weight, kg</b>	0,99	1,18	1,63



<b>Product code</b>	<b>HBL-1430</b>
<b>Type</b>	Hand
<b>Power, W</b>	700
<b>Power modes</b>	2
<b>Body/beaker material</b>	Plastic
<b>Detachable blending shaft</b>	Stainless steel
<b>Blades</b>	Stainless steel
<b>Accessories</b>	Chopper, 300 ml; mixing/measuring beaker, 600 ml; whisk
<b>Dimensions (w × h × d), mm</b>	110 × 230 × 220
<b>Weight, kg</b>	1,25

## Countertop Blenders



<b>Product code</b>	<b>SBG-1510B</b>
<b>Type</b>	Countertop
<b>Power, W</b>	1 000
<b>Power modes</b>	3
<b>Body/beaker material</b>	Glass jar, 1.5 L
<b>Detachable blending shaft</b>	Stainless steel
<b>Blades</b>	8-blade, stainless steel
<b>Modes</b>	Pulse; ice crushing; smoothie
<b>Accessories</b>	Measuring beaker, 700 ml
<b>Dimensions (w x h x d), mm</b>	430 x 280 x 220
<b>Weight, kg</b>	4,75

## Choppers



<b>Product code</b>	<b>CHK-4001BR</b>	<b>CHK-4001W</b>
<b>Power, W</b>	400	400
<b>Body material</b>	Stainless steel with soft-touch lid	Plastic
<b>Beaker material and capacity</b>	Glass, 1 L	Glass, 1 L
<b>Blades</b>	Four titanium coated stainless steel blades	Four titanium coated stainless steel blades
<b>Dimensions (w x h x d), mm</b>	170 x 240 x 180	171 x 240 x 170
<b>Weight, kg</b>	1,85	1,85

Mixers



<b>Product code</b>	<b>HMK-4006W</b>	<b>KSTM-500W</b>	<b>KSTM-8040</b>
<b>Type</b>	Hand	Countertop	Planetary
<b>Power, W</b>	400	500	800
<b>Number of speed settings</b>	5	5	6
<b>TURBO mode</b>	Yes	Yes	Yes
<b>Accessories</b>	Chrome-plated whisks (2 pcs); chrome-plated hooks (2 pcs); accessory storage container	Rotating plastic bowl, 3.2 L; bowl lid; chrome-plated whisks (2 pcs); chrome-plated hooks (2 pcs)	Stainless steel bowl, 4 L; kneading hook; beater; whisk; bowl lid
<b>Dimensions (w × h × d), mm</b>	190 × 170 × 220	220 × 220 × 300	390 × 330 × 230
<b>Weight, kg</b>	1,65	2,37	4,87



<b>Product code</b>	<b>KSTM-8041</b>	<b>KSTM-8042</b>	<b>KSTM-8043</b>
<b>Type</b>	Planetary	Planetary	Planetary
<b>Power, W</b>	800	800	800
<b>Number of speed settings</b>	6	6	6
<b>TURBO mode</b>	Yes	Yes	Yes
<b>Accessories</b>	Stainless steel bowl, 4 L; kneading hook; beater; whisk; bowl lid	Stainless steel bowl, 4 L; kneading hook; beater; whisk; bowl lid	Stainless steel bowl, 4 L; kneading hook; beater; whisk; bowl lid
<b>Dimensions (w × h × d), mm</b>	390 × 330 × 230	390 × 330 × 230	390 × 330 × 230
<b>Weight, kg</b>	4,87	4,87	4,87



Kitchen Scales



<b>Product code</b>	<b>SCK-839B</b>	<b>SCK-893AVOCADO</b>	<b>SCK-893LEMON</b>	<b>SCK-893PASTA</b>
<b>Material</b>	Tempered glass	Tempered glass	Tempered glass	Tempered glass
<b>Weighing step, g</b>	1	1	1	1
<b>Max. weight, kg</b>	5	5	5	5
<b>Control type</b>	Touch	Touch	Touch	Touch
<b>Dimensions (w x d), mm</b>	240 x 150	200 x 180	200 x 180	200 x 180
<b>Batteries</b>	2 x CR2032	2 x AAA	2 x AAA	2 x AAA
<b>Weight, kg</b>	0,49	0,48	0,49	0,49



<b>Product code</b>	<b>SCK-893W</b>	<b>SCK-893WATERMELON</b>	<b>SCK-898R</b>	<b>SCK-900BGR</b>
<b>Material</b>	Tempered glass	Tempered glass	Stainless steel	Plastic
<b>Weighing step, g</b>	1	1	1	1
<b>Max. weight, kg</b>	5	5	5	5
<b>Control type</b>	Touch	Touch	Touch	Touch
<b>Dimensions (w x d), mm</b>	200 x 180	200 x 180	220 x 163	175 x 205
<b>Batteries</b>	2 x AAA	2 x AAA	2 x CR2032	2 x CR2033
<b>Weight, kg</b>	0,47	0,49	0,44	0,4



<b>Product code</b>	<b>SC10GREEN</b>	<b>SC10</b>
<b>Material</b>	Plastic	Plastic
<b>Weighing step, g</b>	50	50
<b>Max. weight, kg</b>	50	50
<b>Control type</b>	Electronic	Electronic
<b>Dimensions (w x d), mm</b>	200 x 18	200 x 18
<b>Batteries</b>	1 x CR2032	1 x CR2032
<b>Weight, kg</b>	0,14	0,14

Kitchen Machines



<b>Product code</b>	<b>KMCH-K1500SS</b>
<b>Power, W</b>	1 500
<b>Number of speed settings</b>	6 + Pulse
<b>Body material</b>	Aluminum; metal gearbox
<b>Bowl capacity, L</b>	6
<b>Bowl lid</b>	Yes
<b>Accessories</b>	Whisk, beater, kneading hook; meat grinding attachment; 1.5 L blender jar; attachment for making kebbe and sausages; attachment for making cookies and pasta; three shredders

Meat Grinders



	<b>MGL-1730R</b>	<b>MGL-2050R</b>	<b>MGL-1790R</b>
<b>Product code</b>	<b>MGL-1730R</b>	<b>MGL-2050R</b>	<b>MGL-1790R</b>
<b>Max. power, W</b>	1 700	1 800	1 700
<b>Reverse function</b>	Yes	Yes	Yes
<b>Processing capacity, kg/min</b>	1,6	1,6	1,6
<b>Overload protection</b>	Yes	Yes	Yes
<b>Perforated discs included</b>	Medium grind, 5 mm; coarse grind, 7 mm	Fine grind, 3 mm; medium grind, 5 mm; coarse grind, 7 mm	Medium grind, 5 mm; coarse grind, 7 mm
<b>Accessories</b>	Attachment for making kebbe and sausages; pusher	Attachment for making kebbe and sausages; attachment for making tomato juice; pusher	Attachment for making kebbe and sausages; attachment for making tomato juice; pusher
<b>Body material</b>	Plastic	Plastic	Metal
<b>Possibility of washing removable metal parts in the dishwasher</b>	No	No	No
<b>Dimensions (w × h × d), mm</b>	290 × 210 × 260	260 × 250 × 320	230 × 250 × 290
<b>Weight, kg</b>	2,88	4,27	3,37



<b>Product code</b>	<b>MGL-3580D</b>	<b>MGK-1900</b>	<b>MGK-2100</b>
<b>Max. power, W</b>	2 200	1 900	2 100
<b>Reverse function</b>	Yes	Yes	Yes
<b>Processing capacity, kg/min</b>	2	1,8	2
<b>Overload protection</b>	Yes	Yes	Yes
<b>Perforated discs included</b>	Medium grind, 5 mm; coarse grind, 7 mm	Fine grind, 3 mm; medium grind, 5 mm; coarse grind, 7 mm	Fine grind, 3 mm; medium grind, 5 mm; coarse grind, 7 mm
<b>Accessories</b>	Attachment for making kebbe and sausages; three graters (shredder, for potato pancakes, slicer); pusher	Four graters (large, standard, shredder, for potato pancakes); attachment for making kebbe and sausages; pusher	Four graters (large, standard, shredder, for potato pancakes); attachment for making kebbe and sausages; burger press; attachment for making tomato juice; pusher
<b>Body material</b>	All metal	Plastic	Plastic
<b>Possibility of washing removable metal parts in the dishwasher</b>	No	No	No
<b>Dimensions (w × h × d), mm</b>	480 × 250 × 260	500 × 200 × 280	480 × 190 × 280
<b>Weight, kg</b>	6,36	4,18	4,59



<b>Product code</b>	<b>MGK-2400</b>
<b>Max. power, W</b>	2 400
<b>Reverse function</b>	Yes
<b>Processing capacity, kg/min</b>	2.2
<b>Overload protection</b>	Yes
<b>Perforated discs included</b>	Fine grind, 3 mm; medium grind, 5 mm; coarse grind, 7 mm
<b>Accessories</b>	Four graters (large, standard, shredder, for potato pancakes); attachment for making kebbe and sausages; attachment for making tomato juice; pusher
<b>Body material</b>	Plastic
<b>Possibility of washing removable metal parts in the dishwasher</b>	No
<b>Dimensions (w × h × d), mm</b>	480 × 190 × 280
<b>Weight, kg</b>	4,59

Coffee Grinders



<b>Product code</b>	<b>KCG-8805</b>	<b>WCG-8301</b>
<b>Type</b>	Rotary	Rotary
<b>Power, W</b>	100	200
<b>Body material</b>	Plastic	Plastic/Stainless steel
<b>Bean container capacity, g</b>	45	60
<b>Blades</b>	Long stainless steel blades	Long stainless steel blades
<b>Protection</b>	Operation is only possible when the cover is pressed	Operation is only possible when the cover is pressed
<b>Features</b>	Storage space for power cable	Storage space for power cable; removable grinding bowl
<b>Weight, kg</b>	0,7	0,95

Slicers



<b>Product code</b>	<b>SDK-200S</b>
<b>Power, W</b>	150
<b>Blade material</b>	Stainless steel
<b>Blade diameter, mm</b>	190
<b>Cut thickness, mm</b>	1 to 15
<b>Additional features</b>	Inclined cutting table; non-slip feet
<b>Dimensions (w x h x d), mm</b>	270 x 280 x 420
<b>Weight, kg</b>	4,5

COOKING



Toasters



Product code	T-F17WG	T-F18B	T-F400G	T-K200
Power, W	930	930	930	800
Body material	Plastic	Plastic	Plastic	Stainless steel
Number of slots	2	2	2	2
Number of heating modes	7	7	7	7
Features	Heating; defrosting; anti-jam protection; auto shut-off	Heating; defrosting; auto shut-off	Heating; defrosting; auto shut-off	Heating; defrosting; auto shut-off
Crumb tray	Yes	Yes	Yes	Yes



Product code	T-K210	T-K301E
Power, W	1000	800
Body material	Stainless steel	Plastic
Number of slots	2	2
Number of heating modes	10	7
Features	Heating; defrosting; auto shut-off	Heating; defrosting; auto shut-off
Crumb tray	Yes	Yes

Sandwich Makers



Product code	SM-H100W	SM-H110BGR	SM-H110BSN
Power, W	700	700	700
Type	Sandwich maker	Grill sandwich maker	Sandwich maker
Number of sandwiches, pcs	2	1	2
Number of replaceable plates, pcs	-	-	-
Surface coating	Non-stick	Non-stick	Non-stick
Light indicator	Yes	Yes	Yes
Dimensions (w × h × d), mm	90 × 240 × 240	110 × 260 × 260	110 × 260 × 260
Weight, kg	1,2	1,5	1,5

## Multi Makers



Product code	SM-H400S	SM-H300B
Power, W	700	700
Type	Sandwich maker, waffle maker, grill	Sandwich maker, waffle maker, grill
Number of sandwiches, pcs	2	2
Number of replaceable plates, pcs	4	3
Surface coating	Non-stick	Non-stick
Light indicator	Yes	Yes
Dimensions (w × h × d), mm	260 × 290 × 140	261 × 290 × 141
Weight, kg	2,69	2,69

## Electric Grills



Product code	GK-2000M	GK-STC20
Power, W	2 000	2 000
Number of modes	6	6
Body material	Metal	Metal
Control type	Mechanical	Touch
Thermostat	Mechanical	Electronic
Heating plate coating	Ceramic	Non-stick
Additional features	Fixation of the upper part in different positions; operation and heating light indication; removable plates and fat drip tray for easy cleaning	Grilling level and temperature adjustment; auto determination of product thickness; possibility of grilling on two plates at the same time with separate temperature settings for each plate; auto shut-off and overheat protection

Electric Hobs



<b>Product code</b>	<b>ECS-J110G</b>	<b>ECS-J115W</b>	<b>ECS-J220G</b>
<b>Heating element type</b>	Cast iron, disc	Cast iron, disc	Cast iron, disc
<b>Power, W</b>	1 000	1 500	1 000 + 1 000
<b>Number of burners</b>	1	1	2
<b>Burner diameter, mm</b>	155	185	155/155
<b>Control type</b>	Mechanical regulator	Mechanical regulator	Mechanical regulator
<b>Thermostat</b>	Mechanical	Mechanical	Mechanical
<b>Additional features</b>	Protection against overheating of heating elements; protection against power surges; light indication	Protection against overheating of heating elements; protection against power surges; light indication	Protection against overheating of heating elements; protection against power surges; light indication



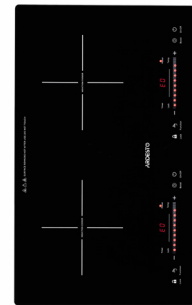
<b>Product code</b>	<b>ECS-J225W</b>
<b>Heating element type</b>	Cast iron, disc
<b>Power, W</b>	1 000 + 1 500
<b>Number of burners</b>	2
<b>Burner diameter, mm</b>	155/185
<b>Control type</b>	Mechanical regulator
<b>Thermostat</b>	Mechanical
<b>Additional features</b>	Protection against overheating of heating elements; protection against power surges; light indication



Induction Hobs



<b>Product code</b>	<b>ICS-B100</b>	<b>ICS-B116</b>	<b>ICS-B118</b>
<b>Heating element type</b>	Induction	Induction	Induction
<b>Power, W</b>	2 000	1 800	1 800
<b>Number of burners</b>	1	1	1
<b>Burner diameter, mm</b>	190	190	190
<b>Control type</b>	Push-button	Touch	Touch
<b>Thermostat</b>	Electronic	Mechanical	Electronic
<b>Additional features</b>	Timer (1-180 min); 7 cooking modes	Timer (1-180 min); temperature adjustment (60-240 °C); auto shut-off after 2 hours of inactivity; protection against power surges	Timer (1-180 min); "Boost" function - intensive heating technology; auto shut-off after 2 hours of inactivity; protection against power surges



<b>Product code</b>	<b>ICS-B216</b>	<b>ICS-B217</b>	<b>ICS-B218</b>
<b>Heating element type</b>	Induction	Induction	Induction
<b>Power, W</b>	1 300 + 1 600	1 300 + 1 600	1 300 + 1 800
<b>Number of burners</b>	2	2	2
<b>Burner diameter, mm</b>	145/167	145/167	190/190
<b>Control type</b>	Touch	Touch	Touch
<b>Thermostat</b>	Mechanical	Electronic	Electronic
<b>Additional features</b>	Timer (1-180 min); auto shut-off after 2 hours of inactivity; protection against power surges	Timer (1-180 min); auto shut-off after 2 hours of inactivity; protection against power surges	Timer (1-180 min); "Boost" function - intensive heating technology; auto shut-off after 2 hours of inactivity; protection against power surges

Food Dehydrators



Product code	FDB-1138	FDB-5320	FDB-5321T	FDB-5385
Power, W	550	245	250	520
Number of tiers	11	5	5	5
Tier size, mm	230 x 295	Ø 320	Ø 320	Ø 385
Thermostat	Mechanical	Mechanical	Electronic	Mechanical
Temperature adjustment, °C	40-70	35-70	40-70	35-70
Timer, h	1 to 48	-	1 to 48	-
Additional features	LED display	-	LED display	-

Slow Cookers



Product code	MC-X42X	MC-X45CH	MC-X16X
Power, W	860	860	860
Number of auto programs, pcs	42	45	16
"Your Recipe" program	Yes	Yes	Yes
Bowl capacity, L	4	4	4
Bowl material	Non-stick ceramic coating	Non-stick ceramic coating	Non-stick coating
LCD display	Yes	Yes	Yes
Reheat function	Yes	Yes	Yes
Delayed start	Yes	Yes	Yes
Accessories	Measuring beaker; soup spoon; rice spoon; steam cooker	Measuring beaker; soup spoon; rice spoon; steam cooker	Measuring beaker; soup spoon; rice spoon; steam cooker
Cookbook	Yes	Yes	Yes
Dimensions (w x h x d), mm	300 x 310 x 300	300 x 320 x 300	300 x 320 x 300
Weight, kg	3,32	3,35	3,2



Product code	DMC-SA1212SB	DMC-SS1812B
Power, W	900	900
Number of auto programs, pcs	16	16
"Your Recipe" program	Yes	Yes
Bowl capacity, L	1,5/1,5	1,5/1,5
Bowl material	Daikin non-stick coating	Daikin non-stick coating
LCD display	Yes	Yes
Reheat function	Yes	Yes
Delayed start	Yes	Yes
Accessories	Measuring beaker; soup spoon; rice spoon; steam cooker, 2 pcs	Measuring beaker; soup spoon; rice spoon; steam cooker, 2 pcs
Cookbook	Yes	Yes
Dimensions (w × h × d), mm	300 × 320 × 300	207 × 405 × 310
Weight, kg	3,2	5

## Microwave Ovens



Product code	GO-S723W	GO-S724W	GO-S721W
Capacity, L	20	20	20
Output power, W	700	700	700
Control type	Mechanical	Mechanical	Mechanical
Color	White	White	White
Auto programs (Menu)	-	-	-
Features	Reheating/cooking; timer; defrosting	Reheating/cooking; timer; defrosting	Reheating/cooking; timer; defrosting
Power levels	6	6	6
Turntable diameter, cm	24,5	24,5	24,5
Dimensions (w × h × d), cm	46,6 × 24,3 × 33,6	46,6 × 24,3 × 33,6	45,2 × 26,2 × 34,5
Weight, kg	9,5	9,5	10,5



<b>Product code</b>	<b>GO-S725W</b>	<b>GO-S825S</b>	<b>GO-E725S</b>
<b>Capacity, L</b>	20	20	20
<b>Output power, W</b>	700	800	700
<b>Control type</b>	Mechanical	Mechanical	Electronic
<b>Color</b>	White	Silver	Silver
<b>Auto programs (Menu)</b>	-	-	Milk/Coffee; Rice; Spaghetti; Potato; Auto Reheat; Fish; Pizza; Popcorn
<b>Features</b>	Reheating/cooking; timer; defrosting	Reheating/cooking; timer; defrosting	Reheating/cooking; timer; quick defrosting/defrosting by weight; multi-stage cooking; delayed start; clock; child lock
<b>Power levels</b>	6	6	6
<b>Turntable diameter, cm</b>	24,5	24,5	24,5
<b>Dimensions (w x h x d), cm</b>	45,2 x 26,2 x 34,5	45,2 x 26,2 x 34,4	45,2 x 26,2 x 34,5
<b>Weight, kg</b>	10,5	11,5	10,5



<b>Product code</b>	<b>GO-E735S</b>	<b>GO-E745S</b>	<b>GO-E745GB</b>
<b>Capacity, L</b>	20	20	20
<b>Output power, W</b>	700	700	700
<b>Control type</b>	Electronic	Electronic	Electronic
<b>Color</b>	Gray	Gray	Black
<b>Auto programs (Menu)</b>	Milk/Coffee; Potato; Auto Reheat; Fish; Pizza; Popcorn	Milk/Coffee; Rice; Spaghetti; Potato; Auto Reheat; Fish; Pizza; Popcorn	Milk/Coffee; Rice; Spaghetti; Potato; Auto Reheat; Fish; Pizza; Popcorn
<b>Features</b>	Reheating/cooking; timer; quick defrosting/defrosting by weight; multi-stage cooking; delayed start; clock; child lock	Reheating/cooking; timer; quick defrosting/defrosting by weight; multi-stage cooking; delayed start; ECO mode; silent mode; clock; child lock	Reheating/cooking; timer; quick defrosting/defrosting by weight; multi-stage cooking; delayed start; ECO mode; silent mode; clock; child lock
<b>Power levels</b>	6	5	6
<b>Turntable diameter, cm</b>	24,5	24,5	24,5
<b>Dimensions (w x h x d), cm</b>	45,2 x 26,2 x 35	45,2 x 26,2 x 35	45,2 x 26,2 x 34,5
<b>Weight, kg</b>	10,5	10,5	10,9



Product code	GO-E845GB	GO-E865B	GO-E923W
Capacity, L	20	20	23
Output power, W	800	800	900
Control type	Electronic	Electronic	Electronic
Color	Black	Black	White
Auto programs (Menu)	Milk/Coffee; Rice; Spaghetti; Potato; Auto Reheat; Fish; Pizza; Popcorn	Milk/Coffee; Rice; Spaghetti; Potato; Auto Reheat; Fish; Pizza; Popcorn	Meat; Poultry; Fish
Features	Reheating/cooking; timer; quick defrosting/defrosting by weight; multi-stage cooking; delayed start; clock; child lock	Reheating/cooking; timer; quick defrosting/defrosting by weight; multi-stage cooking; delayed start; child lock	Reheating/cooking; timer; quick defrosting/defrosting by weight; multi-stage cooking; delayed start
Power levels	6	8	10
Turntable diameter, cm	24,5	Without turntable	27
Dimensions (w × h × d), cm	45,2 × 26,2 × 34,5	45,7 × 27,1 × 36,2	48,3 × 28,1 × 35,4
Weight, kg	10,5	12	13



Product code	GO-M923W	GO-M923B	GO-EGR923BL
Capacity, L	23	23	23
Output power, W	900	900	900
Control type	Mechanical	Mechanical	Electronic
Color	White	Black	Silver, black
Auto programs (Menu)	-	-	Milk/Coffee; Rice; Spaghetti; Potato; Auto Reheat; Fish; Poultry; Meat; BBQ
Features	Reheating/cooking; timer; defrosting	Reheating/cooking; timer; defrosting	Reheating/cooking; grill; combined; timer; quick defrosting/defrosting by weight; multi-stage cooking; delayed start; clock; child lock
Power levels	6	6	11
Turntable diameter, cm	27	27	27
Dimensions (w × h × d), cm	48,3 × 28,1 × 35,2	48,3 × 28,1 × 40	48,3 × 28,1 × 36
Weight, kg	13,6	13,6	14,1

Electric Ovens



Product code	MEO-S40GW	MEO-S40GB	MEO-S40FGG
Power, W	1 300	1 300	1 300
Inner chamber capacity, L	40	40	40
Internal coating	Enamel	Enamel	Enamel
Timer, min	90	90	90
Heating modes	Top, bottom, combined	Top, bottom, combined	Top, bottom, combined, convection
Convection	No	No	Yes
Double glass	No	No	Yes
Features	Inner chamber backlight; improved thermal insulation; concealed heating element	Inner chamber backlight; improved thermal insulation; concealed heating element	Inner chamber backlight; improved thermal insulation; concealed heating element
Accessories	Rectangular baking tray; round baking tray; grill grate	Rectangular baking tray; round baking tray; grill grate	Rectangular baking tray; round baking tray; grill grate



Product code	MEO-S45GG	MEO-S45GBG	MEO-S45FGB
Power, W	1 600	1 600	1 600
Inner chamber capacity, L	45	45	45
Internal coating	Enamel	Enamel	Enamel
Timer, min	90	90	90
Heating modes	Top, bottom, combined	Top, bottom, combined	Top, bottom, combined, convection
Convection	No	No	Yes
Double glass	No	No	Yes
Features	Inner chamber backlight; improved thermal insulation; concealed heating element	Inner chamber backlight; improved thermal insulation; concealed heating element	Inner chamber backlight; improved thermal insulation; concealed heating element
Accessories	Rectangular baking tray; round baking tray; grill grate	Rectangular baking tray; round baking tray; grill grate	Rectangular baking tray; round baking tray; grill grate



Product code	MEO-S45FGG	MEO-S50GB	MEO-S50FBG
Power, W	1 600	1 600	1 600
Inner chamber capacity, L	45	50	50
Internal coating	Enamel	Enamel	Enamel
Timer, min	90	90	90
Heating modes	Top, bottom, combined, convection	Top, bottom, combined, grill (skewer)	Top, bottom, combined, convection
Convection	Yes	No	Yes
Double glass	Yes	No	Yes
Features	Inner chamber backlight; improved thermal insulation	Inner chamber backlight; improved thermal insulation; chrome-plated heating elements	Inner chamber backlight; improved thermal insulation; concealed heating element
Accessories	Rectangular baking tray; round baking tray; grill grate	Skewer; rectangular baking tray; round baking tray; grill grate	Rectangular baking tray; round baking tray; grill grate



Product code	EO-3015B	EO-4220GRCS	EO-4415RCB
Power, W	1 500	2 000	1 500
Inner chamber capacity, L	30	42	44
Internal coating	Stainless steel	Stainless steel	Stainless steel
Timer, min	90	90	90
Heating modes	Top, bottom, combined	Top, bottom, combined, convection	Top, bottom, combined, convection
Convection	No	Yes	Yes
Double glass	No	Yes	No
Features	Inner chamber backlight	Inner chamber backlight	Inner chamber backlight
Accessories	Square baking tray; grill grate; handle for safe grate removal; crumb tray	Square baking tray; skewer; handle for safe skewer removal; grill grate; handle for safe grate removal; crumb tray	Square baking tray; skewer; handle for safe skewer removal; grill grate; handle for safe grate removal; crumb tray

Freestanding Cookers



Product code	FSC-F5060BW	FSC-F5060MW	FSC-F5060AW
Type	Combined	Combined	Combined
Dimensions (w x d), cm	50 x 60	50 x 60	50 x 60
Gas control	Cooktop	Cooktop	Cooktop
Number and type of burners	4 (gas)	4 (gas)	4 (gas)
Cooktop grate material	Enamelled steel	Enamelled steel	Cast iron
Oven capacity, L	52	52	52
Timer	No	No	Mechanical
Convection	No	No	No
Guide type	Profiled	Profiled	Profiled
Additional features	Push-button electric ignition, metal cover, backlight, cookware drawer	Electric ignition, glass cover, backlight, cookware drawer	Electric ignition, grill, removable door glass, glass cover, backlight, cookware drawer
Set includes	Cooker, standard baking tray, grate, nozzle set for natural gas, user manual (warranty card)	Cooker, standard baking tray, grate, nozzle set for natural gas, user manual (warranty card)	Cooker, deep baking tray, standard baking tray, grate, nozzle set for natural gas, user manual (warranty card)



Product code	FSC-F5060PW	FSC-F5060PB	FSC-F5060PS
Type	Combined	Combined	Combined
Dimensions (w x d), cm	50 x 60	50 x 60	50 x 60
Gas control	Cooktop	Cooktop	Cooktop
Number and type of burners	4 (gas)	4 (gas)	4 (gas)
Cooktop grate material	Cast iron	Cast iron	Cast iron
Oven capacity, L	52	52	52
Timer	Mechanical	Mechanical	Mechanical
Convection	Yes	Yes	Yes
Guide type	Profiled	Profiled	Profiled
Additional features	Electric ignition, grill, removable door glass, glass cover, backlight, cookware drawer	Electric ignition, grill, removable door glass, glass cover, backlight, cookware drawer	Electric ignition, grill, removable door glass, glass cover, backlight, cookware drawer
Set includes	Cooker, standard baking tray, grate, nozzle set for natural gas, user manual (warranty card)	Cooker, deep baking tray, standard baking tray, grate, nozzle set for natural gas, user manual (warranty card)	Cooker, deep baking tray, standard baking tray, grate, nozzle set for natural gas, user manual (warranty card)





Product code	FSC-F6060AW	FSC-F6060CW	FSCF-C604CB
Type	Combined	Combined	Combined
Dimensions (w x d), cm	60 x 60	60 x 60	60 x 60
Gas control	Cooktop	Cooktop	Cooktop
Number and type of burners	4 (gas)	3 gas burners + 1 cast iron plate (Hot plate)	2 gas burners + 2 cast iron plates (Hot plate)
Cooktop grate material	Enamelled steel	Enamelled steel	Enamelled steel
Oven capacity, L	64	64	58
Timer	Mechanical	Mechanical	Mechanical
Convection	No	No	No
Guide type	Removable	Removable	Profiled
Additional features	Electric ignition, removable door glass, glass cover, backlight, cookware drawer	Electric ignition, removable door glass, glass cover, backlight, cookware drawer	Electric ignition, removable door glass, glass cover, backlight, hinged cookware drawer
Set includes	Cooker, standard baking tray, grate, nozzle set for natural gas, user manual (warranty card)	Cooker, standard baking tray, grate, nozzle set for natural gas, user manual (warranty card)	Cooker, standard baking tray, grate, nozzle set for natural gas, user manual (warranty card)



Product code	FSC-F6060PW	FSC-F6060PS	FSCF-C604W
Type	Combined	Combined	Combined
Dimensions (w x d), cm	60 x 60	60 x 60	60 x 60
Gas control	Cooktop	Cooktop	Cooktop
Number and type of burners	4 (gas)	4 (gas)	4 (gas)
Cooktop grate material	Cast iron	Cast iron	Cast iron
Oven capacity, L	64	64	72
Timer	Mechanical	Mechanical	Mechanical
Convection	Yes	Yes	No
Guide type	Removable	Removable	Removable
Additional features	Electric ignition, smart burner timer, grill, removable door glass, glass cover, backlight, cookware drawer	Electric ignition, smart burner timer, grill, removable door glass, glass cover, backlight, cookware drawer	Electric ignition, removable door glass, glass cover, backlight, hinged cookware drawer
Set includes	Cooker, standard baking tray, grate, nozzle set for natural gas, user manual (warranty card)	Cooker, deep baking tray, standard baking tray, grate, nozzle set for natural gas, user manual (warranty card)	Cooker, standard baking tray, grate, nozzle set for natural gas, user manual (warranty card)



Product code	FSCF-C606GB	FSCF-C606W	FSCF-C606BI
Type	Combined	Combined	Combined
Dimensions (w x d), cm	60 x 60	60 x 60	60 x 60
Gas control	Cooktop	Cooktop	Cooktop
Number and type of burners	4 (gas)	4 (gas)	4 (gas)
Cooktop grate material	Cast iron	Cast iron	Cast iron
Oven capacity, L	66	66	66
Timer	Mechanical	Mechanical	Mechanical
Convection	Yes	Yes	No
Guide type	Removable	Removable	Removable
Additional features	Electric ignition, removable door glass, glass cover, backlight, hinged cookware drawer	Electric ignition, removable door glass, glass cover, backlight, hinged cookware drawer	Electric ignition, removable door glass, glass cover, backlight, hinged cookware drawer
Set includes	Cooker, standard baking tray, grate, nozzle set for natural gas, user manual (warranty card)	Cooker, standard baking tray, grate, nozzle set for natural gas, user manual (warranty card)	Cooker, standard baking tray, grate, nozzle set for natural gas, user manual (warranty card)



Product code	FSCF-C606MB	FSCF-C606ST	FSCF-C607CR
Type	Combined	Combined	Combined
Dimensions (w x d), cm	60 x 60	60 x 60	60 x 60
Gas control	Cooktop	Cooktop	Cooktop
Number and type of burners	4 (gas)	4 (gas)	4 (gas)
Cooktop grate material	Cast iron	Cast iron	Cast iron
Oven capacity, L	66	66	53
Timer	Electronic	Mechanical	Analog
Convection	Yes	Yes	Yes
Guide type	Removable	Removable	Profiled
Additional features	Electric ignition, removable door glass, glass cover, backlight, hinged cookware drawer	Electric ignition, removable door glass, glass cover, backlight, hinged cookware drawer	Electric ignition, removable door glass, glass cover, backlight, hinged cookware drawer
Set includes	Cooker, standard baking tray, grate, nozzle set for natural gas, user manual (warranty card)	Cooker, standard baking tray, grate, nozzle set for natural gas, user manual (warranty card)	Cooker, skewer, standard baking tray, grate, nozzle set for natural gas, user manual (warranty card)



Product code	FSCF-C606B	FSCF-C606BG	FSCF-E604W
<b>Type</b>	Combined	Combined	Electric
<b>Dimensions (w × d), cm</b>	60 × 60	60 × 60	60 × 60
<b>Gas control</b>	Cooktop	Cooktop	-
<b>Number and type of burners</b>	4 (gas)	4 (gas)	4 cast iron plates (Hot plate)
<b>Cooktop grate material</b>	Cast iron	Cast iron	-
<b>Oven capacity, L</b>	53	53	53
<b>Timer</b>	Analog	Analog	Mechanical
<b>Convection</b>	Yes	Yes	No
<b>Guide type</b>	Profiled	Profiled	Profiled
<b>Additional features</b>	Electric ignition, removable door glass, glass cover, backlight, hinged cookware drawer	Electric ignition, removable door glass, glass cover, backlight, hinged cookware drawer	Electric ignition, removable door glass, glass cover, backlight, hinged cookware drawer
<b>Set includes</b>	Cooker, skewer, standard baking tray, grate, nozzle set for natural gas, user manual (warranty card)	Cooker, skewer, standard baking tray, grate, nozzle set for natural gas, user manual (warranty card)	Cooker, standard baking tray, grate, user manual (warranty card)



Product code	FSCF-E605B
<b>Type</b>	Electric
<b>Dimensions (w × d), cm</b>	60 × 60
<b>Gas control</b>	-
<b>Number and type of burners</b>	4 cast iron plates (Hot plate)
<b>Cooktop grate material</b>	-
<b>Oven capacity, L</b>	53
<b>Timer</b>	Mechanical
<b>Convection</b>	Yes
<b>Guide type</b>	Profiled
<b>Additional features</b>	Electric ignition, removable door glass, glass cover, backlight, hinged cookware drawer
<b>Set includes</b>	Cooker, standard baking tray, grate, user manual (warranty card)

ARDESTO



HOUSEHOLD APPLIANCES

---

# CORDLESS VACUUM CLEANERS



Robotic Vacuum Cleaners



Product code	RVC-S1300W	RVC-S1200B	RVC-S600W
Type	Robotic vacuum cleaner with wet cleaning function	Robotic vacuum cleaner with wet cleaning function	Robotic vacuum cleaner with wet cleaning function
Suction power, W	120-150	120-150	120-150
Color	White	Black	White silver
Dust collector capacity, L	0,4	0,5	0,4
Water tank capacity, L	0,11	0,15	0,13
Cleaning area, m <sup>2</sup>	90-120	90-120	90-120
Set includes	Charging dock; HEPA filter; fiber polisher; magnetic strip	Charging dock; HEPA filter; fiber polisher; magnetic strip	Charging dock; HEPA filter; fiber polisher
Output filter	HEPA	HEPA	HEPA
Battery life, min	90	100	120
Full charge time, h	Up to 5	Up to 5.5	Up to 5

Cordless Vacuum Cleaners



Product code	CVC-D02PB	CVC-D0611BB	CVC-X0521WG
Type	Portable car	Household cordless	Household cordless
Color	Black	Black blue	White gray
Dust collector capacity, L	0,15	0,6	0,5
Set includes	Power adapter; "2 in 1" brush for hard-to-reach areas; stand for easy storage	Wall mount for vertical parking; turbo brush; furniture brush; brush for hard-to-reach areas	Wall mount for vertical parking; turbo brush; brush for hard-to-reach areas
Output filter	HEPA	HEPA	HEPA
Battery life, min	12	18 (turbo mode); 60 (normal mode)	17 (turbo mode); 35 (normal mode)
Full charge time, h	Up to 3	Up to 5	Up to 5
Additional features	-	Brush illumination; two speed settings	Removable module for quick cleaning; two speed settings



<b>Product code</b>	<b>CVC-X0621WB</b>	<b>CVC-X1011BB</b>
<b>Type</b>	Household cordless	Household cordless
<b>Color</b>	White blue	Black blue
<b>Dust collector capacity, L</b>	0,55	1
<b>Set includes</b>	Charging base; turbo brush; brush for hard-to-reach areas	Wall mount for vertical parking; turbo brush
<b>Output filter</b>	HEPA	HEPA
<b>Battery life, min</b>	17 (turbo mode); 35 (normal mode)	22 (turbo mode); 50 (normal mode)
<b>Full charge time, h</b>	Up to 5	Up to 6
<b>Additional features</b>	Removable module for quick cleaning; two speed settings	Brush illumination; two speed settings

ARDESTO



GARMENT CARE

---



## Fabric Pill Removers



<b>Product code</b>	<b>LSH-ZH1</b>
<b>Body material</b>	Plastic
<b>Color</b>	White, green
<b>Blades</b>	Stainless steel (3 pcs)
<b>Removable pill container</b>	Yes
<b>Protection</b>	Metal grid
<b>Batteries</b>	2 x AA
<b>Dimensions (w x h x d), mm</b>	50 x 74 x 104
<b>Weight, g</b>	92

## Irons



<b>Product code</b>	<b>IR-C2230-BUR</b>	<b>IR-C2228-TQ</b>	<b>IR-C2232-BL</b>
<b>Type</b>	Steam iron	Steam iron	Steam iron
<b>Auto shut-off function</b>	Yes	Yes	Yes
<b>Continuous steam</b>	35 g/min	35 g/min	35 g/min
<b>Steam boost</b>	70 g/min	70 g/min	70 g/min
<b>Power, W</b>	2 200	2 200	2 200
<b>Sole cover type</b>	Ceramic	Ceramic	Ceramic
<b>Water tank capacity, ml</b>	300	280	320
<b>Body material</b>	Plastic	Plastic	Plastic
<b>Cable length, cm</b>	190	190	190
<b>Color</b>	White, raspberry	White, light blue	White, blue
<b>Dimensions (w x h x d), cm</b>	30 x 13 x 11	30 x 13 x 11	30 x 14 x 11,5
<b>Weight, kg</b>	1,16	1,07	1,3



Product code	IR-B2234	IR-B2235	IR-B2245-E	IR-C2233-GR
Type	Steam iron	Steam iron	Steam iron	Steam iron
Auto shut-off function	Yes	Yes	Yes	Yes
Continuous steam	35 g/min	35 g/min	35 g/min	35 g/min
Steam boost	90-110 g/min	90-110 g/min	90-110 g/min	90-110 g/min
Power, W	2 400	2 400	2 400	2 200
Sole cover type	Ceramic	Ceramic	Ceramic	Ceramic
Water tank capacity, ml	350	450	400	340
Body material	Plastic	Plastic	Plastic	Plastic
Cable length, cm	190	190	190	190
Color	Purple, black	Black, gold	White, gray	Black, orange
Dimensions (w x h x d), cm	32 x 17 x 15	33 x 17 x 14	32 x 16 x 13	31 x 18 x 14
Weight, kg	1,42	1,51	1,49	1,49

Steamers



Product code	IR-C2230-BUR
Type	Vertical steamer
Auto shut-off function	Yes
Continuous steam	30 g/min
Steam boost	100 g/min
Power, W	1 785
Sole cover type	Stainless steel
Water tank capacity, ml	1 500
Body material	Plastic
Cable length, cm	190
Color	White, green
Dimensions (w x h x d), cm	34 x 34 x 36
Weight, kg	5,86

ARDESTO



**BEAUTY & HEALTH CARE  
PRODUCTS**

---

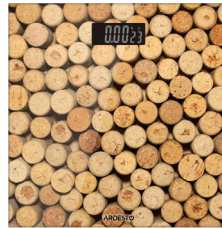
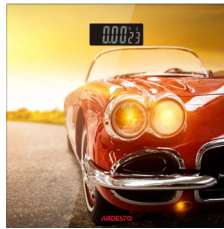
HEALTH CARE



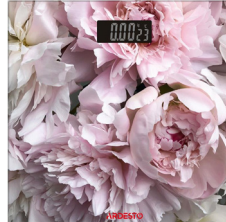
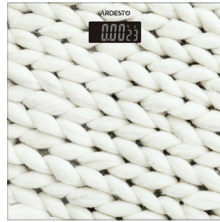
## Bathroom Scales



Product code	SCB-965BL	SCB-965CAT	SCB-965LEAVES
Material	Glass	Glass	Glass
Color	Multi-color	Multi-color	Multi-color
Weighing step, g	50	50	50
Max. weight, kg	150	150	150
Display	LED	LED	LED
Units	kg; lb:oz	kg; lb:oz	kg; lb:oz
Batteries	2 x AAA	2 x AAA	2 x AAA
Dimensions (w x h x d), cm	30 x 1,8 x 30	30 x 1,8 x 30	30 x 1,8 x 30
Weight, kg	1,3	1,3	1,3



Product code	SCB-965CAR	SCB-965CORK	SCB-965DOG
Material	Glass	Glass	Glass
Color	Multi-color	Multi-color	Multi-color
Weighing step, g	50	50	50
Max. weight, kg	150	150	150
Display	LED	LED	LED
Units	kg; lb:oz	kg; lb:oz	kg; lb:oz
Batteries	2 x AAA	2 x AAA	2 x AAA
Dimensions (w x h x d), cm	30 x 1,8 x 30	30 x 1,8 x 30	30 x 1,8 x 30
Weight, kg	1,3	1,3	1,3



Product code	SCB-965KNIT	SCB-965PEONIES	SCB-965PLANK
Material	Glass	Glass	Glass
Color	Multi-color	Multi-color	Multi-color
Weighing step, g	50	50	50
Max. weight, kg	150	150	150
Display	LED	LED	LED
Units	kg; lb:oz	kg; lb:oz	kg; lb:oz
Batteries	2 x AAA	2 x AAA	2 x AAA
Dimensions (w x h x d), cm	30 x 1,8 x 30	30 x 1,8 x 30	30 x 1,8 x 30
Weight, kg	1,3	1,3	1,3



Product code	SCB-965TRAVEL	SCB-965WHEAT	SCB-965MARMOT
Material	Glass	Glass	Glass
Color	Multi-color	Multi-color	Multi-color
Weighing step, g	50	50	50
Max. weight, kg	150	150	150
Display	LED	LED	LED
Units	kg; lb:oz	kg; lb:oz	kg; lb:oz
Batteries	2 x AAA	2 x AAA	2 x AAA
Dimensions (w x h x d), cm	30 x 1,8 x 30	30 x 1,8 x 30	30 x 1,8 x 30
Weight, kg	1,3	1,3	1,3

## Oral Irrigators



Product code	POI-MD300W	POI-H350W	OI-MD600W	OI-R600WTB
<b>Type</b>	Portable	Portable	Stationary	Stationary
<b>Color</b>	White, gray	White, gray	White, gray	White, gray
<b>Number of nozzles, pcs</b>	2	7	8	3
<b>Pressure modes</b>	4	5	10	10
<b>Pressure range, MPa</b>	0,2-0,86	0,2-0,86	0,2-0,86	0,2-0,86
<b>Pulsation frequency, m./min</b>	1 400-1 800	1 400-1 800	1 200	1 400
<b>Water tank capacity, ml</b>	320	300	600	600
<b>Set includes</b>	Classic nozzles (2 pcs); USB cable	Nozzles of different types (7 pcs); power unit; USB cable; transportation case; nozzle storage case	Nozzles of different types (3 pcs); power unit	Nozzles of different types (8 pcs); 2 interchangeable toothbrush heads; power unit
<b>Battery life</b>	Up to 7 days	Up to 7 days	-	-
<b>Protection</b>	IPX7	IPX7	IPX4	IPX4

## Electric Toothbrushes



Product code	ETB-003DOG	ETB-101W	ETB-112W	OI-R600WTB
<b>Type</b>	Sound	Sound	Sound	Sound
<b>Color</b>	White, gray	White	White	White
<b>Operation modes</b>	1	3	4	4
<b>Vibration frequency, rpm</b>	20 000	35 000	40 000	40 000
<b>Set includes</b>	3 interchangeable nozzles	USB cable	2 interchangeable nozzles; docking station with USB connector	2 interchangeable nozzles; docking station with standard plug
<b>Power type</b>	Batteries (2 x AAA)	Battery (350 mAh)	Battery (650 mAh)	Battery (650 mAh)
<b>Battery life</b>	Depends on batteries	Up to 25 days	Up to 25 days	Up to 25 days
<b>Protection</b>	IPX6	IPX7	IPX7	IPX7



Product code	ETB-211B	ETB-212CB
Type	Sound	Sound
Color	Black	Black
Operation modes	4	4
Vibration frequency, rpm	40 000	40 000
Set includes	5 interchangeable nozzles; docking station with standard plug; storage and transportation case	4 interchangeable nozzles; docking station with standard outlet and mouthwash glass; storage and transportation case
Power type	Battery (650 mAh)	Battery (650 mAh)
Battery life	Up to 25 days	Up to 25 days
Protection	IPX7	IPX7



BEAUTY



Hair Dryers



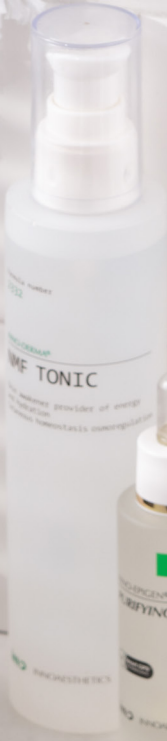
<b>Product code</b>	<b>HD-503T</b>	<b>HD-Y210</b>	<b>HD-Y120T</b>
<b>Type</b>	Travel	Standard	Travel
<b>Power, W</b>	1 200	1 750-2 100	1 200
<b>Temperature modes</b>	2	3	2
<b>Number of speed settings</b>	2	2	2
<b>Features</b>	Folding handle	Cool Shot function; auto cable rewind function	Folding handle
<b>Dimensions (w x h x d), cm</b>	17 x 23 x 7,5	20,9 x 24,5 x 9,3	12,6 x 20,7 x 6,7
<b>Weight, g</b>	340	610	340



<b>Product code</b>	<b>HD-Y220PRO</b>	<b>HD-522</b>
<b>Type</b>	Professional	Standard
<b>Power, W</b>	1 850-2 200	1 800-2 200
<b>Temperature modes</b>	3	3
<b>Number of speed settings</b>	2	2
<b>Features</b>	Cool Shot function; diffuser; AC motor	Cool Shot function
<b>Dimensions (w x h x d), cm</b>	21 x 28 x 8,8	25,5 x 26 x 9
<b>Weight, g</b>	620	480



<b>Product code</b>	<b>HD-C100</b>
<b>Type</b>	Hot-air hair brush
<b>Power, W</b>	1 000
<b>Temperature modes</b>	2
<b>Rotation</b>	Clockwise and counterclockwise
<b>Brush diameter</b>	40 mm, 50 mm
<b>Attachments</b>	2 removable attachments with ceramic coating
<b>Features</b>	Cool Shot Function
<b>Weight, g</b>	0,86



Professional Hair Dryers



Product code	HD-Y221PRO	HD-Y222PRO	HD-Y223PRO
Type	Professional	Professional	Professional
Power, W	2 100	2 200	2 200
Temperature modes	3	3	3
Number of speed settings	2	2	2
Body material	Plastic, soft-touch coating	Plastic, soft-touch coating	Plastic, soft-touch coating
Features	AC motor; overheat protection; Cool Shot function	AC motor; overheat protection; Cool Shot function	AC motor; overheat protection; Cool Shot function
Attachments	Diffuser, concentrator	Diffuser, concentrator	Diffuser, concentrator
Dimensions (w x h x d), cm	10 x 29 x 12	11 x 30 x 27	9 x 30 x 22
Weight, g	0,86	0,923	0,93

Curlers



Product code	HC-705	HC-726G	HC-730G
Type	Conical curler	For small curls	Curler
Purpose	Horizontal and vertical curls; natural wave effect	Small curls to add hair volume; afro curls	Horizontal and vertical curls; natural wave effect
Power, W	30	35	45
Heating temperature, °C	200	200	90-180
Heating element coating	Ceramic	Ceramic	Ceramic
Features	Power indicator; overheat protection	Power indicator; overheat protection; heat-resistant nylon glove included	6 temperature levels; auto shut-off after 60 minutes after switching on; heat-resistant nylon glove included
Dimensions (w x h x d), cm	35,5 x 3,5 x 3,5	38 x 3,5 x 3,5	35 x 5 x 6
Weight, g	235	250	320

Straighteners



<b>Product code</b>	<b>HS-615D</b>	<b>HS-612</b>	<b>HSB-621</b>
<b>Type</b>	Straightener	Straightener	Straightening brush
<b>Purpose</b>	Hair straightening and curling	Crimped hair effect; visual hair volume boost	Hair straightening and creating a smooth hairstyle
<b>Power, W</b>	50	65	70
<b>Heating temperature, °C</b>	110-230	110-215	80-230
<b>Heating element coating</b>	Ceramic	Ceramic	Ceramic
<b>Features</b>	Electronic control; LED display; soft-touch body coating; auto shut-off after 60 minutes after switching on	3 temperature levels; can be used for wet and dry hair; auto shut-off after 60 minutes after switching on	Electronic control; LED display; auto shut-off after 60 minutes after switching on
<b>Dimensions (w x h x d), cm</b>	32 x 3,5 x 3	30,5 x 4,5 x 5	32 x 5 x 8
<b>Weight, g</b>	340	390	390

Hair Clippers



<b>Product code</b>	<b>HC-Y20-B</b>	<b>HC-Y30-DBS</b>	<b>HC-Y40-DBS</b>
<b>Blade material</b>	Stainless steel	Ceramics; titanium coated stainless steel	Ceramics; titanium coated stainless steel
<b>Cutting length range, mm</b>	1-18	0,5-30	0,5-12
<b>Number of attachments, pcs</b>	1 (with length adjustment from 3 to 18 mm)	6	4
<b>Number of length settings</b>	7	11	9
<b>Power type</b>	Mains, battery	Mains, battery	Mains, battery
<b>Set includes</b>	Charger; lubricant; cleaning brush; 1 attachment	Charger; lubricant; cleaning brush; 6 attachments	Charger; lubricant; cleaning brush; 4 attachments
<b>Run time, min</b>	45	45	100
<b>Full charge time, min</b>	90	70	180



Product code	HC-Y10-B	HC-Y22-B	HC-Y32-B
Blade material	Stainless steel	Ceramic coated stainless steel	Ceramic coated stainless steel
Cutting length range, mm	0,5-10	0,1-18	0,5-30
Number of attachments, pcs	1	1	6
Number of length settings	10	6	6
Power type	Battery	Mains, battery	Battery
Run time, min	45	60	60
Full charge time, min	90	90	150

Trimmers



Product code	TR-Y5
Body material	Plastic
Blade material	Stainless steel
Color	Black
Power, rpm	7 000
Set includes	Trimmer; protective cap; cleaning brush
Power type	Battery (1 x AAA)

Epilators



Product code	LESH-Y305
Body material	Plastic
Color	Black and gold
Epilation module	18 tweezers (6 rows of 3 pairs)
Set includes	Epilator; protective cap; cleaning brush
Type of hair removal	Dry
Power type	Battery, 1000 mAh
Run time, min	40
Full charge time, min	80

**ARDESTO**



**REFRIGERATION EQUIPMENT**

---

Refrigerators



Product code	DFM-50W	DFM-50X	DFM-90W
Total capacity, L	50	50	93
Number of shelves/boxes in refrigerator compartment, pcs	2	2	3
Number of shelves/drawers in freezer compartment, pcs	-	-	-
Cooling system	Static	Static	Static
Energy class	A+	A+	A+
Control type	Mechanical	Mechanical	Mechanical
Display	-	-	-
Features	Door reversal	Door reversal	Door reversal
Climate class	N/ST	N/ST	N/ST/T
Dimensions (w x h x d), cm	47,2 x 49,2 x 45	47,2 x 49,2 x 45	47,2 x 85 x 45
Weight, kg	13,7	13,7	21,7



Product code	DFM-90X	DTF-M212W143	DTF-M212X143
Total capacity, L	93	204	204
Number of shelves/boxes in refrigerator compartment, pcs	3	3	3
Number of shelves/drawers in freezer compartment, pcs	-	2	2
Cooling system	Static	Static	Static
Energy class	A+	A+	A+
Control type	Mechanical	Mechanical	Mechanical
Display	-	-	-
Features	Door reversal	Door reversal	Door reversal
Climate class	N/ST/T	N/ST/T	N/ST
Dimensions (w x h x d), cm	47,2 x 85 x 45	55 x 143 x 55	55 x 143 x 55
Weight, kg	21,7	38,5	38,5





Product code	DDF-M260W177	DDF-M267W180	DDF-M295W188
Total capacity, L	260	260	295
Number of shelves/boxes in refrigerator compartment, pcs	3	4	4
Number of shelves/drawers in freezer compartment, pcs	2	3	3
Cooling system	Low Frost	Static	Static
Energy class	A+	A+	A+
Control type	Mechanical	Mechanical	Mechanical
Display	-	-	-
Features	Door reversal; Low Frost system, which reduces ice buildup in the freezer compartment	Door reversal	Door reversal; Low Frost system, which reduces ice buildup in the freezer compartment
Climate class	N/ST/T	N/ST/T	N/ST
Dimensions (w × h × d), cm	56,8 × 177 × 54,7	58 × 180 × 54,5	54,5 × 189 × 59,5
Weight, kg	48	55	55,5



Product code	DNF-M295W188	DNF-M295BG188	DNF-M295X188
Total capacity, L	295	302	295
Number of shelves/boxes in refrigerator compartment, pcs	4	4	4
Number of shelves/drawers in freezer compartment, pcs	3	3	3
Cooling system	Total No Frost	Total No Frost	Total No Frost
Energy class	A+	A+	A+
Control type	Electronic	Electronic	Electronic
Display	Internal, LED indication	Internal, LED indication	Internal, LED indication
Features	Multi Air Flow system (uniform multi-flow cooling); Fresh Zone; door reversal	Multi Air Flow system (uniform multi-flow cooling); Fresh Zone; door reversal	Multi Air Flow system (uniform multi-flow cooling); Fresh Zone; door reversal
Climate class	N/ST/T	N/ST/T	N/ST/T
Dimensions (w × h × d), cm	63 × 188 × 59,5	63 × 188 × 59,5	63 × 188 × 59,5
Weight, kg	61	62	61



Product code	DNF-M259W180	DNF-M326W200	DNF-M326X200
Total capacity, L	259	321	321
Number of shelves/boxes in refrigerator compartment, pcs	4	4	4
Number of shelves/drawers in freezer compartment, pcs	4	3	3
Cooling system	Total No Frost	Total No Frost	Total No Frost
Energy class	A+	A++	A++
Control type	Electronic	Electronic	Electronic
Display	Internal, LED indication	External, LED indication	External, LED indication
Features	Easy Storage drawer; Convenient Box; auto closing door system; Fresh Zone; door reversal	Multi Air Flow system (uniform multi-flow cooling); Fresh Zone; door reversal	Multi Air Flow system (uniform multi-flow cooling); Fresh Zone; door reversal
Climate class	N/ST/T	N/ST/T	N/ST/T
Dimensions (w × h × d), cm	63 × 180 × 54,5	63 × 201 × 59,5	63 × 201 × 59,5
Weight, kg	61	61	61



Product code	DNF-M378BI200	DNF-M378GL200
Total capacity, L	378	378
Number of shelves/boxes in refrigerator compartment, pcs	4	4
Number of shelves/drawers in freezer compartment, pcs	3	3
Cooling system	Total No Frost	Total No Frost
Energy class	A+	A+
Control type	Electronic	Electronic
Display	External, digital	External, digital
Features	Auto closing door system; 90° door opening; Meat & Fish-Box (for storing fish and meat at a temperature of about 0 °C); door reversal	Auto closing door system; 90° door opening; Meat & Fish-Box (for storing fish and meat at a temperature of about 0 °C); door reversal
Climate class	N/ST/T	N/ST/T
Dimensions (w × h × d), cm	66 × 201,8 × 59,5	66 × 201,8 × 59,5
Weight, kg	74	74

## Coolers



Product code	FRM-145ECM	FRM-200ECM	FRM-250E	FRM-290E
Usable capacity, L	142	198	249	290
Energy class	A+	A+	A+	A+
Temperature in freezer mode, °C	-12 to -24	-12 to -24	-12 to -24	-12 to -24
Temperature in refrigerator mode, °C	0 to +10	0 to +10	0 to +10	0 to +10
Run time, h	15	21	43,3	45
Number of shelves/boxes, pcs	1	1	2	2
Control type	Electronic, digital display	Electronic, digital display	Electronic, digital display	Electronic, digital display
Climate class	N/SN/ST/T	N/SN/ST/T	N/SN/ST/T	N/SN/ST/T
Dimensions (w × h × d), cm	85 × 55 × 63,2	85 × 55 × 81,6	98,5 × 85 × 60	115,5 × 85 × 64,5
Weight, kg	23,5	27,8	37	42



Product code	FRM-145MCH	FRM-200MCH	FRM-250MCH	FRM-300MCH
Usable capacity, L	142	198	249	290
Energy class	A+	A+	A+	A+
Temperature in freezer mode, °C	-16 to -24	-16 to -24	-12 to -24	-12 to -24
Temperature in refrigerator mode, °C	0 to +10	0 to +10	-	0 to +10
Run time, h	30	34	46	57
Number of shelves/boxes, pcs	1	2	2	2
Control type	Mechanical	Mechanical	Mechanical	Mechanical
Climate class	N/SN/ST	N/SN/ST/T	N/SN/ST/T	N/SN/ST/T
Dimensions (w × h × d), cm	85 × 55 × 63,2	94,5 × 85 × 52,3	98,5 × 85 × 60	111,5 × 85 × 67
Weight, kg	23,5	33	36	42



<b>Product code</b>	<b>FRM-362MCH</b>
<b>Usable capacity, L</b>	362
<b>Energy class</b>	A+
<b>Temperature in freezer mode, °C</b>	-12 to -24
<b>Temperature in refrigerator mode, °C</b>	0 to +10
<b>Run time, h</b>	50
<b>Number of shelves/boxes, pcs</b>	2
<b>Control type</b>	Mechanical
<b>Climate class</b>	N/SN/ST/T
<b>Dimensions (w × h × d), cm</b>	82,5 × 74,5 × 125,5
<b>Weight, kg</b>	47.1

Freezers



<b>Product code</b>	<b>URM-85M60</b>	<b>URM-85M90</b>	<b>URM-160M</b>	<b>URM-N227E172</b>
<b>Usable capacity, L</b>	60	60	227	261
<b>Energy class</b>	A+	A+	A+	A+
<b>Temperature in freezer mode, °C</b>	-12 to -24	-12 to -24	-12 to -24	-12 to -24
<b>Temperature in refrigerator mode, °C</b>	0	-	-	+2 to +8
<b>Run time, h</b>	9	9	16,6	15
<b>Number of shelves/boxes, pcs</b>	3	3	5	7
<b>Control type</b>	Mechanical	Mechanical	Mechanical	Electronic, LED indication
<b>Climate class</b>	N/ST	N/ST	N/SN/ST	N/SN/ST/T
<b>Dimensions (w × h × d), cm</b>	44,5 × 84,5 × 47,5	84,5 × 47,5 × 44,5	55 × 142 × 55	59,5 × 172,2 × 63,2
<b>Weight, kg</b>	20,1	20,1	42	60

## Wine Coolers



Product code	WCF-M24	WCF-M34
Type	Freestanding	Freestanding
Cooling system	Static	Static
Number of bottles, pcs	24	34
Number of shelves, pcs	4	6
Total capacity, L	66	93
Energy class	A	A
Cooling temperature, °C	5 to 18	5 to 18
Climate class	-	-
Control type	Electronic, touch	Electronic, touch
Features	LED backlight; glass door with UV filter; warning system for long door opening and temperature deviation	LED backlight; glass door with UV filter; warning system for long door opening and temperature deviation
Climate class	N	ST
Dimensions (w × h × d), cm	48 × 44 × 64,2	48 × 44 × 64,2
Weight, kg	24,5	28

## Ice Makers



Product code	IM-A1200B	IM-A1200SS
Type	Domestic	Domestic
Water tank capacity, L	1,8	1,8
Max. ice production per day, kg	12	12
Ice container capacity, kg	0,6	0,6
Production cycle duration, min	8-9	8-9
Additional options/features	Self-cleaning function; power indicator, water shortage indicator and full ice container indicator	Self-cleaning function; power indicator, water shortage indicator and full ice container indicator
Power, W	100	100
Display	-	-
Color	Black	Stainless steel, black
Dimensions (w × h × d), cm	32 × 22 × 30,5	32 × 22 × 30,5
Weight, kg	7,5	7,5

**ARDESTO**



**WASHING MACHINES**

## Semi Automatic Washing Machines



Product code	WMH-B65	WMH-B65C	WMH-B65D
Type	Semi automatic	Semi automatic	Semi automatic
Load type	Top	Top	Top
Capacity, kg	6,5	6,5	6,5
Spin speed, rpm	-	1 350	1 350
Number of washing modes	2	3	3
Features	Washing timer	Washing timer; spin timer	Washing timer; spin timer
Additional options	-	-	-
Energy class	A	A	A
Display	No	No	No
Color	White and gray	White and gray	White and black
Dimensions (w x h x d), cm	84 x 45 x 52,5	84,9 x 41 x 74,1	84,5 x 43 x 73,5
Weight, kg	12	18,5	18,5



Product code	WMH-W60C	WMH-B80D	WMH-B65CPM
Type	Semi automatic	Semi automatic	Semi automatic
Load type	Top	Top	Top
Capacity, kg	6	8	6,5
Spin speed, rpm	1 350	1 350	1 350
Number of washing modes	3	3	3
Features	Washing timer; spin timer	Washing timer; spin timer	Washing timer; spin timer
Additional options	-	-	Water pump
Energy class	A	A	A
Display	No	No	No
Color	White	White and black	White and gray
Dimensions (w x h x d), cm	84,9 x 41 x 74,1	93 x 45,5 x 78,6	84,9 x 41 x 74,1
Weight, kg	18,5	21,5	18,5



Product code	WMH-B65DPM	WMH-W60CPM	WMH-B80DPM
Type	Semi automatic	Semi automatic	Semi automatic
Load type	Top	Top	Top
Capacity, kg	6,5	6	8
Spin speed, rpm	1 350	1 350	1 350
Number of washing modes	3	3	2
Features	Washing timer; spin timer	Washing timer	Washing timer; spin timer
Additional options	Water pump	Water pump	Water pump
Energy class	A	A	A
Display	No	No	No
Color	White and black	White	White and black
Dimensions (w x h x d), cm	84,5 x 43 x 73,5	84,9 x 41 x 74,1	93 x 45,5 x 78,6
Weight, kg	18,5	18,5	21,5

Automatic Washing Machines



Product code	SWMG-6120W	SWMG-7120W	SWMG-7121W
Type	Automatic	Automatic	Automatic
Load type	Front	Front	Front
Capacity, kg	6	7	7
Spin speed, rpm	1 200	1 200	1 200
Number of washing modes	10	10	10
Features	Add garments; temperature/speed settings; rinse+; child lock	Add garments; temperature/speed settings; rinse+; child lock	Steam washing; add garments; temperature/speed settings; rinse+; child lock
Additional options	Collapsible tank; honeycomb drum; intelligent control system (control of water temperature / spin speed / foaming / balancing laundry in the drum)	Collapsible tank; honeycomb drum; intelligent control system (control of water temperature / spin speed / foaming / balancing laundry in the drum)	Collapsible tank; honeycomb drum; intelligent control system (control of water temperature / spin speed / foaming / balancing laundry in the drum)
Energy class	A++	A++	A++
Display	Yes	Yes	Yes
Color	White	White	White
Dimensions (w x h x d), cm	85 x 42 x 60	85 x 42 x 60	85 x 42 x 60
Weight, kg	52	52	52





Product code	WMS-6118W	WMS-6109W	WMS-6109S
Type	Automatic	Automatic	Automatic
Load type	Front	Front	Front
Capacity, kg	6	6	6
Spin speed, rpm	1 000	1 000	1 000
Number of washing modes	16	12	12
Features	Delayed start; temperature/speed settings; child lock	Delayed start; temperature/speed settings; child lock	Delayed start; temperature/speed settings; child lock
Additional options	Collapsible tank; honeycomb drum	Collapsible tank; honeycomb drum	Collapsible tank; honeycomb drum
Energy class	A++	A++	A++
Display	No	No	No
Color	White	White	Silver
Dimensions (w × h × d), cm	85 × 48 × 59,5	85 × 48 × 59,5	85 × 48 × 59,5
Weight, kg	53	53	53



Product code	WMS-6109DG	WMS-6115W	WMS-6115DG
Type	Automatic	Automatic	Automatic
Load type	Front	Front	Front
Capacity, kg	6	6	6
Spin speed, rpm	1 000	1 000	1 000
Number of washing modes	12	12	12
Features	Delayed start; temperature/speed settings; child lock	Delayed start; temperature/speed settings; child lock	Delayed start; temperature/speed settings; child lock
Additional options	Collapsible tank; honeycomb drum	Collapsible tank; honeycomb drum	Collapsible tank; honeycomb drum
Energy class	A++	A++	A++
Display	Yes	Yes	Yes
Color	Dark gray	White	Dark gray
Dimensions (w × h × d), cm	85 × 48 × 59,5	85 × 48 × 59,5	85 × 44 × 59,5
Weight, kg	53	53	53

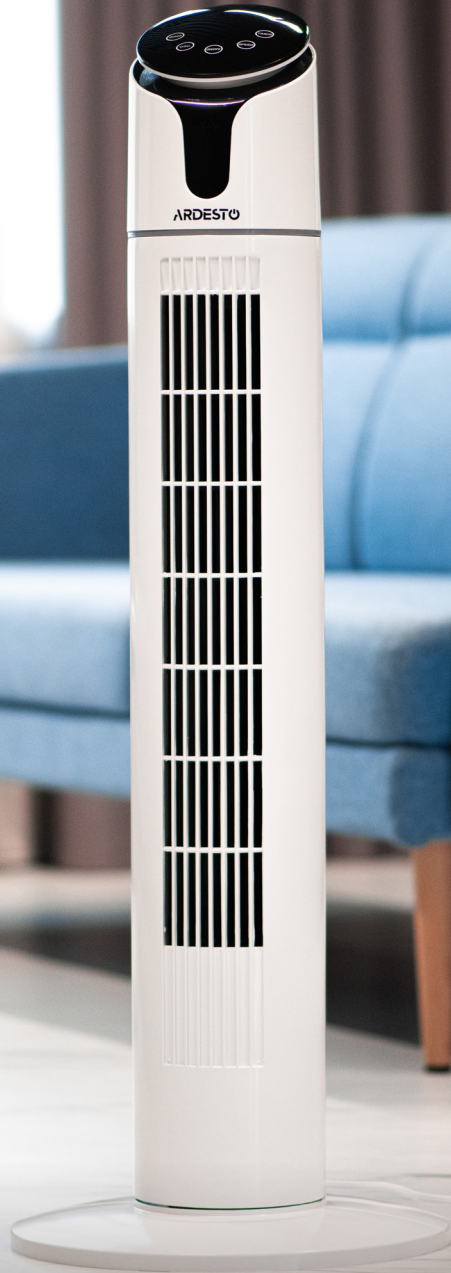


Product code	WMS-7118W	WMS-7109W	WMS-7109DG
Type	Automatic	Automatic	Automatic
Load type	Front	Front	Front
Capacity, kg	7	7	7
Spin speed, rpm	1 000	1 000	1 000
Number of washing modes	12	12	12
Features	Delayed start; temperature/speed settings; child lock	Delayed start; temperature/speed settings; child lock	Delayed start; temperature/speed settings; child lock
Additional options	Collapsible tank; honeycomb drum	Collapsible tank; honeycomb drum	Collapsible tank; honeycomb drum
Energy class	A++	A++	A++
Display	No	Yes	Yes
Color	White	White	Dark gray
Dimensions (w × h × d), cm	85 × 48 × 59,5	85 × 48 × 59,5	85 × 48 × 59,5
Weight, kg	53	53	53



Product code	WMS-7115W	WMS-7115DG	WMS-7117IWBD
Type	Automatic	Automatic	Automatic
Load type	Front	Front	Front
Capacity, kg	7	7	7
Spin speed, rpm	1 000	1 000	1 400
Number of washing modes	12	12	12
Features	Delayed start; temperature/speed settings; child lock	Delayed start; temperature/speed settings; child lock	Delayed start; temperature/speed settings; child lock
Additional options	Collapsible tank; honeycomb drum	Collapsible tank; honeycomb drum	Inverter motor; drum backlight; steam washing; collapsible tank; honeycomb drum
Energy class	A++	A++	A+++
Display	Yes	Yes	Yes
Color	Dark gray	Dark gray	White
Dimensions (w × h × d), cm	85 × 48 × 59,5	85 × 48 × 59,5	85 × 48 × 59,5
Weight, kg	53	53	53

**ARDESTO**



**CLIMATE CONTROL  
EQUIPMENT**

---

Convactor Heaters



Product code	CH-1500MOW	CH-2000MOW	CH-1500MCW	CH-2000MCW
Power, W	750/1 500	1 000/2 000	1 500	2 000
Heating area, m <sup>2</sup>	15	20	15	20
Heating element	Open stitch	Open stitch	Closed ribbed	Closed ribbed
Protection class	IP20	IP20	IP20	IP24
Control type	Mechanical	Mechanical	Mechanical	Mechanical
Dimensions (w × h × d), cm	45 × 60 × 11	45 × 74 × 11	45 × 60 × 11	45 × 78,5 × 11
Weight, kg	3,8	4,4	4,4	5,2



Product code	CH-1500ECW	CH-2000ECW	CHK-2000MW	CHB-2000MBD
Power, W	1 500	2 000	2 000	2 000
Heating area, m <sup>2</sup>	15	20	20	20
Heating element	Closed ribbed	Closed ribbed	Open wired	Open
Protection class	IP24	IP24	IP20	IP20
Control type	Mechanical	Mechanical	Mechanical	Mechanical
Dimensions (w × h × d), cm	66 × 45 × 11	74 × 45 × 11	52 × 34 × 20	78 × 50 × 13
Weight, kg	4,7	5,4	1,85	3,8



Product code	CHB-2000MWP	CHH-2000MBR	CHH-2000MWC
Power, W	2 000	2 000	2 000
Heating area, m <sup>2</sup>	20	20	20
Heating element	Open	Open	Open
Protection class	IP20	IP20	IP20
Control type	Mechanical	Mechanical	Mechanical
Dimensions (w × h × d), cm	78 × 50 × 13	60 × 38 × 26	60 × 38,8 × 26
Weight, kg	3,8	3,2	3,2

## Fan Heaters



<b>Product code</b>	<b>FHB-2000TW</b>	<b>FHK-2000GY</b>	<b>FHK-2000BG</b>	<b>FHY-2000WB</b>
<b>Power, W</b>	1 000/2 000	2 000	2 000	2 000
<b>Heating area, m<sup>2</sup></b>	20	20	20	20
<b>Heating element</b>	Ceramic PTC	Spiral	Spiral	Spiral
<b>Thermostat</b>	Yes	Yes	Yes	Yes
<b>Protection</b>	Overheat and tip-over	Overheat and tip-over	Overheat and tip-over	Overheat and tip-over
<b>Dimensions (w × h × d), cm</b>	31,5 × 87 × 31,5	25 × 21 × 13	24 × 30 × 17	24 × 30 × 17
<b>Weight, kg</b>	2,4	1	1,06	1,06

## Industrial Fan Heaters



<b>Product code</b>	<b>IFH-02B</b>	<b>IFH-03B</b>
<b>Power, W</b>	2 000	3 000
<b>Heating area, m<sup>2</sup></b>	20	30
<b>Heating element</b>	Ceramic	Ceramic
<b>Installation</b>	Floor standing	Floor standing
<b>Thermostat</b>	Yes	Yes
<b>Protection</b>	Overheat, IP20	Overheat, IP20
<b>Dimensions (w × h × d), cm</b>	17 × 22 × 19,5	20 × 30,5 × 25,5
<b>Weight, kg</b>	1,5	2,7

Oil Heaters

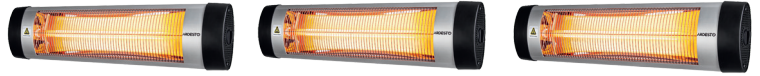


Product code	OFH-07X1	OFH-09X1	OFH-11X1
Power, W	1 500	2 000	2 500
Heating area, m <sup>2</sup>	15	20	25
Number of sections	7	9	11
Protection class	IP20	IP20	IP20
Thermostat	Yes	Yes	Yes
Protection	Overheat, tip-over sensor	Overheat, tip-over sensor	Overheat, tip-over sensor
Dimensions (w × h × d), cm	45 × 60 × 11	45 × 74 × 11	45 × 60 × 11
Weight, kg	3,8	4,4	4,4



Product code	OFH-E09X2	OFH-E11X2
Power, W	2 000	2 500
Heating area, m <sup>2</sup>	20	25
Number of sections	9	11
Protection class	IP20	IP20
Thermostat	Yes	Yes
Protection	Overheat, tip-over sensor	Overheat, tip-over sensor
Dimensions (w × h × d), cm	44 × 65 × 14	50,5 × 63 × 13,5
Weight, kg	8,2	10,8

Infrared Heaters



Product code	IH-2000-Q1S	IH-2500-Q1S	IH-3000-Q1S
Power, W	2 000	2 500	3 000
Heating area, m <sup>2</sup>	9	12	20
Heating element	Quartz	Quartz	Quartz
Installation	Wall or ceiling mounting; floor standing (optional, need to purchase IH-TS-01)	Wall or ceiling mounting; floor standing (optional, need to purchase IH-TS-01)	Wall or ceiling mounting; floor standing (optional, need to purchase IH-TS-01)
Protection class	IP24	IP24	IP24
Control type	Mechanical	Mechanical	Mechanical
Features	Protective grille, overheat protection, adjustable thermostat	Protective grille, overheat protection, adjustable thermostat	Protective grille, overheat protection, adjustable thermostat
Warranty	1 year	1 year	1 year
Dimensions (w × h × d), cm	81 × 20 × 10	81 × 20 × 10	81 × 20 × 10
Weight, kg	3,37	3	5,2



Product code	IH-TS-01
Dimensions (w × h × d), cm	100 × 12,2 × 12,2
Weight, kg	2,5
Height adjustment, m	1.1 to 1.8



Product code	IHS-1650	IHS-2200	IHS-2800
Power, W	1 650	2 200	2 800
Heating area, m <sup>2</sup>	15	22	28
Heating element	Quartz	Quartz	Quartz
Installation	Floor standing	Floor standing	Floor standing
Protection class	IP20	IP20	IP20
Control type	Mechanical	Mechanical	Mechanical
Features	3 heating modes, protective grille, overheat and tip-over protection	4 heating modes, protective grille, overheat and tip-over protection	4 heating modes, protective grille, overheat and tip-over protection
Warranty	1 year	1 year	1 year
Dimensions (w × h × d), cm	54,5 × 44,5 × 17,2	55,4 × 53,5 × 19,5	73,4 × 57,5 × 19,5
Weight, kg	2,4	3,7	5,5



<b>Product code</b>	<b>IHS-2000T</b>
<b>Power, W</b>	2 000
<b>Heating area, m<sup>2</sup></b>	20
<b>Heating element</b>	Carbon
<b>Installation</b>	Floor standing
<b>Protection class</b>	IP20
<b>Control type</b>	Electronic
<b>Features</b>	4 heating modes, protective grille, digital safety thermostat, digital timer, remote control
<b>Warranty</b>	1 year
<b>Dimensions (w × h × d), cm</b>	92 × 39 × 29,5
<b>Weight, kg</b>	4,8

Ceramic Heating Panels



<b>Product code</b>	<b>HCP-395BG-ECO</b>	<b>HCP-395WT-ECO</b>	<b>HCP-400BG</b>	<b>HCP-400BGM</b>
<b>Power, W</b>	395	395	400	400
<b>Heating area, m<sup>2</sup></b>	8	8	8	8
<b>Heating element</b>	Ceramic infrared	Ceramic infrared	Ceramic infrared	Ceramic infrared
<b>Protection class</b>	IP54	IP54	IP34	IP34
<b>Thermostat</b>	No	No	No	No
<b>Color</b>	Beige	White	Beige	Beige marble
<b>Dimensions (w × h × d), cm</b>	60,3 × 60,3 × 1,4	60,3 × 60,3 × 1,4	60 × 60 × 1,4	60 × 60 × 1,4
<b>Weight, kg</b>	11,5	11,5	11,2	11,2





Product code	HCP-400BK	HCP-400WT	HCP-600BGM	HCP-600BRM
Power, W	400	400	600	600
Heating area, m <sup>2</sup>	8	8	11	11
Heating element	Ceramic infrared	Ceramic infrared	Ceramic infrared	Ceramic infrared
Protection class	IP34	IP34	IP34	IP34
Thermostat	No	No	No	No
Color	Black	White	Beige marble	Brown marble
Dimensions (w × h × d), cm	60 × 60 × 1,4	60 × 60 × 1,4	90 × 60 × 1,7	90 × 60 × 1,7
Weight, kg	11,2	11,2	21	21



Product code	HCP-600M	HCP-600SAM	HCP-600WTM	HCP-1000RBG
Power, W	600	600	600	1 000
Heating area, m <sup>2</sup>	11	11	11	20
Heating element	Ceramic infrared	Ceramic infrared	Ceramic infrared	Ceramic infrared
Protection class	IP34	IP34	IP34	IP33
Thermostat	No	No	No	Yes
Color	Marble	Sand marble	White marble	Beige
Dimensions (w × h × d), cm	60 × 60 × 1,4	60 × 60 × 1,4	60 × 60 × 1,4	120 × 60 × 1,6
Weight, kg	11,2	11,2	11,2	26



Product code	HCP-1000RBGM	HCP-1000RBK	HCP-1000RBRM	HCP-1000RM
Power, W	1 000	1 000	1 000	1 000
Heating area, m <sup>2</sup>	20	20	20	20
Heating element	Ceramic infrared	Ceramic infrared	Ceramic infrared	Ceramic infrared
Protection class	IP33	IP33	IP33	IP33
Thermostat	Yes	Yes	Yes	Yes
Color	Beige marble	Black	Brown marble	Marble
Dimensions (w × h × d), cm	120 × 60 × 1,6	120 × 60 × 1,6	120 × 60 × 1,6	120 × 60 × 1,6
Weight, kg	26	26	26	26



Product code	HCP-1000RWT	HCP-1000RWTM	HCP-500RBG	HCP-500RWT
Power, W	1 000	1 000	500	500
Heating area, m <sup>2</sup>	20	20	10	10
Heating element	Ceramic infrared	Ceramic infrared	Ceramic infrared	Ceramic infrared
Protection class	IP33	IP33	IP54	IP54
Thermostat	Yes	Yes	Yes	Yes
Color	White	White marble	Beige	White
Dimensions (w × h × d), cm	120 × 60 × 1,6	120 × 60 × 1,6	60,3 × 60,3 × 1,7	60,3 × 60,3 × 1,7
Weight, kg	26	26	12	12



Product code	HCP-550RBGM	HCP-550RBRM	HCP-550RM	HCP-550RWTM
Power, W	550	550	550	550
Heating area, m <sup>2</sup>	11	11	11	11
Heating element	Ceramic infrared	Ceramic infrared	Ceramic infrared	Ceramic infrared
Protection class	IP33	IP33	IP33	IP33
Thermostat	Yes	Yes	Yes	Yes
Color	Beige marble	Brown marble	Marble	White marble
Dimensions (w × h × d), cm	90 × 45 × 1,6	90 × 45 × 1,6	90 × 45 × 1,6	90 × 45 × 1,6
Weight, kg	15	15	15	15



Product code	HCP-750RBGM	HCP-750RBRM	HCP-750RM	HCP-750RWTM
Power, W	750	750	750	750
Heating area, m <sup>2</sup>	15	15	15	15
Heating element	Ceramic infrared	Ceramic infrared	Ceramic infrared	Ceramic infrared
Protection class	IP33	IP33	IP33	IP33
Thermostat	Yes	Yes	Yes	Yes
Color	Beige marble	Brown marble	Marble	White marble
Dimensions (w × h × d), cm	90 × 60 × 1,7	90 × 60 × 1,7	90 × 60 × 1,7	90 × 60 × 1,7
Weight, kg	21,5	21,5	21,5	21,5

Fans



Product code	FN-1608CW	FN-1608RW	FN-R1608CB	FN-R1608RW
Power, W	45	45	45	45
Air humidification	No	No	No	No
Number of speed settings	3	3	3	3
Remote control	No	No	Yes	Yes
Protective grille diameter, cm	40	40	40	40
Stand type	Cross	Round	Cross	Round
Timer	No	No	Yes	Yes
Color	White	White	Black	White
Height, cm	125	125	125	125
Weight, kg	2,6	2,6	2,6	2,6



Product code	FNM-X1W	FNM-X1B	FNM-FNM-X2G	FNM-X2S
Power, W	100	100	100	100
Air humidification	Yes	Yes	Yes	Yes
Number of speed settings	3	3	3	3
Remote control	Yes	Yes	Yes	Yes
Protective grille diameter, cm	47	47	47	47
Stand type	Platform with wheels	Platform with wheels	Platform with wheels	Platform with wheels
Timer	Yes	Yes	Yes	Yes
Color	White	Black	Silver	Gold
Height, cm	132	132	127	127
Weight, kg	8,3	8,3	9,6	9,6



Product code	FNT-C880	FNT-R36X1W	FNT-R36X1WY22	FNT-R44X1W
Power, W	50	50	50	50
Air humidification	No	No	No	No
Number of speed settings	3	3	3	3
Remote control	Yes	Yes	Yes	Yes
Protective grille diameter, cm	32	-	-	-
Stand type	Round	Round	Round	Round
Timer	Yes	Yes	Yes	Yes
Height, cm	88	90	90	110
Color	White and black	Silver	White	Silver
Weight, kg	3,5	3,6	3,2	4,6



Product code	FNT-R44X1WY22
Power, W	50
Air humidification	No
Number of speed settings	3
Remote control	Yes
Stand type	Round
Timer	Yes
Height, cm	110
Color	White
Weight, kg	3,6

## Humidifiers



Product code	USH-M-BTN-4L-W	USH-M-LCD-4L-W	USH-M-CNTRTCH-8L-W
Tank capacity, L	4	4	8
Humidification, ml/h	300	300	300
Noise level, dB	< 38	< 38	35
Electricity consumption (cold steam), W	28	28	28
Recommended area, m <sup>2</sup>	Up to 40	Up to 40	Up to 50
Display	Yes	Yes	Yes
Dimensions (w × h × d), cm	37 × 16 × 16	37 × 16 × 16	71 × 22,6 × 22,6
Weight, kg	1,2	1,2	2,2

## Air Purifiers



Product code	AP-200-W1
Area, m <sup>2</sup>	Up to 25
Power, W	20
Noise level, dB	59
Air flow, m <sup>3</sup> /h	200
Dimensions (w × h × d), cm	53 × 32,5 × 20
Weight, kg	4.5

Electric Water Heaters



<b>Product code</b>	<b>3100839</b>	<b>3100840</b>	<b>3100841</b>	<b>3100842</b>
<b>Heating element type</b>	Wet	Wet	Wet	Wet
<b>Capacity, L</b>	10	10	15	15
<b>Energy class</b>	B	D	A	B
<b>Power, W</b>	1 200	1 200	1 200	1 200
<b>Body shape</b>	Square	Square	Square	Square
<b>Body material</b>	Plastic	Plastic	Plastic	Plastic
<b>Pipe connection</b>	Bottom, 1/2"	Top, 1/2"	Bottom, 1/2"	Top, 1/2"
<b>Warranty</b>	2 years (tank), 1 year (electronics)	2 years (tank), 1 year (electronics)	2 years (tank), 1 year (electronics)	2 years (tank), 1 year (electronics)
<b>Dimensions (w × h × d), cm</b>	36 × 36 × 28	36 × 36 × 28	36 × 36 × 32,7	36 × 36 × 32,7
<b>Weight, kg</b>	6,3	6,3	7,1	7,1



<b>Product code</b>	<b>3100843</b>	<b>3201512</b>	<b>3201513</b>	<b>3201515</b>
<b>Heating element type</b>	Wet	Wet	Wet	Wet
<b>Capacity, L</b>	30	50	80	100
<b>Energy class</b>	C	D	D	A
<b>Power, W</b>	1 500	1 500	1 500	1 500
<b>Body shape</b>	Square	Cylindrical	Cylindrical	Cylindrical
<b>Body material</b>	Plastic	Enameled sheet steel	Enameled sheet steel	Enameled sheet steel
<b>Pipe connection</b>	Bottom, 1/2"	Bottom, 1/2"	Bottom, 1/2"	Bottom, 1/2"
<b>Warranty</b>	2 years (tank), 1 year (electronics)	2 years (tank), 1 year (electronics)	2 years (tank), 1 year (electronics)	2 years (tank), 1 year (electronics)
<b>Dimensions (w × h × d), cm</b>	44,6 × 44,6 × 39	45 × 55,3 × 48	45 × 75,8 × 48	45 × 91,3 × 48
<b>Weight, kg</b>	6,3	6,3	7,1	7,1

**ARDESTO**



**BUILT-IN APPLIANCES**

---

Built-In Wine Coolers



<b>Product code</b>	<b>WCBI-M44</b>
<b>Type</b>	Built-in
<b>Cooling system</b>	Static
<b>Number of bottles, pcs</b>	44
<b>Number of shelves, pcs</b>	6
<b>Total capacity, L</b>	137 (top zone - 75, bottom zone - 62)
<b>Energy class</b>	A
<b>Cooling temperature, °C</b>	Bottom zone: 10 to 18; top zone: 5 to 14
<b>Control type</b>	Electronic, touch
<b>Features</b>	LED backlight; glass door with UV filter; warning system for long door opening and temperature deviation
<b>Climate class</b>	N/ST
<b>Dimensions (w x h x d), cm</b>	59,5 x 59,5 x 87
<b>Weight, kg</b>	51











ARDESTO



Kyiv, 18A Marko Vovchok str.  
Tel.: (44) 230 34 74; (44) 390 55 10  
<https://ardesto.com.ua>